



Cardon Sales Company, LLC provides a multitude of solutions for sealing applications. We specialize in **ANSI sealing**, but we are also able to supply a variety of component seals. Full details can be found on our website: www.cardonsales.com.

CARTRIDGES

S1 SINGLE CARTRIDGES



- One of the industry's most aggressively priced stationary cartridges
- Easy cartridge installation
- Stationary multiple spring design
- Springs isolated from product
- Hydraulically balanced design
- Flush connection standard
- Vent and Drain connections upon request
- Big Bore gland alternatives
- User friendly setting clips

D2PR DOUBLE CARTRIDGES



- For critical, toxic and non-lubricating fluids
- Pumping ring standard
- Stationary multiple spring cartridge design
- Easy cartridge installation
- ANSI pump-compatible
- Springs protected from the product
- Compensates for pressure reversals
- Inboard silicon carbide vs. silicon carbide face combination is standard
- The industry's only double cartridge seal with three identical monolithic silicon carbide faces

WELDED METAL BELLOWS



WB 400:
Retainer: 316 SS; Core: Hast C; Hub: 316SS
WB 450:
Retainer: 316 SS; Core: AM350; Hub: 316SS
WB 500:
Retainer: Hast C; Core: Hast C; Hub: Hast C

- Static "O" ring - no shaft fretting
- Self cleaning plates
- Single piece construction
- No springs to clog
- Fits into narrow cross section pumps



WB 800:
Retainer: Alloy 42; Core: Heat treated Am 350; Hub & Housing: 316SS

- Static Grafoil Packing, No O rings
- Temperatures to 800 deg F
- Self cleaning plates
- No springs to clog
- Balanced design - 300 PSI without modification
- Fits into narrow cross section pumps



S1WBC CARTRIDGE

- Easy cartridge installation
- Static "O" rings - No shaft fretting
- Universal gland design conforms to most common bolt circles
- Fits all ANSI pumps
- Self cleaning plates
- Balanced design - 300 PSI without modification
- Fits into narrow cross section pumps

MULTI SPRING COMPONENT SEALS



A91:
PTFE
WEDGE
DESIGN



CP1:
ORING DESIGN WITH
DRIVE LUGS/
SPRINGS OUT OF THE
PRODUCT



ARO
RUGGED ORING
DESIGN



ACX:
OUTSIDE SEAL FOR
CORROSIVE
APPLICATIONS



A8T:
ORING DESIGN



CP8:
ORING DESIGN WITH
MONOLITHIC FACE /
SPRING OUT OF THE
PRODUCT



A8TB & A9TB
BALANCED DESIGN
FOR HIGH PRESSURE

SINGLE SPRING COMPONENT SEALS

- Most common seal designs in the world
- Bellows design helps compensate for face wear
- Seals are Bi-directional
- Torque of pump shaft drives through drive band and notches
- Rugged single spring construction
- Standard on variety of pump designs
- Multiple face and elastomer choices
- Single "O" Ring designs - A 157

A1:



A21:



A1B:



A6:



A2:



A 1M:



A157:



A6A:



**ALL STANDARD "PS"
NUMBERS AVAILABLE**

AMERICA'S LARGEST METRIC SEAL INVENTORY

SINGLE SPRING RUBBER BELLOWS



ES100



ES120

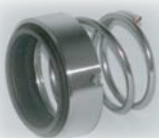


ES130



METRIC TYPE 21'S

TAPERED SPRING COMPONENTS



ES320



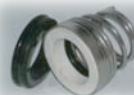
ES370



ES378



ESAR



ESFN

ESWW: FLYGT PUMP SEALS



MACHINED/ENGINEERED COMPONENTS

From 10 mm to 100 mm, **Cardon Sales Company** has access to the most comprehensive on-hand inventory of metric seals in North America.

Seals for most foreign pumps are available



ES790



ES502



ES58 & ES59

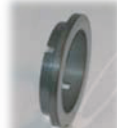
SEATS

All common style seats in stock from 0.375" to 4.750"

- Silicon Carbide
- Tungsten Carbide
- Hardened Stainless
- Ceramic
- Carbon



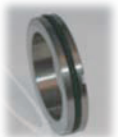
CUP



"L" SHAPE



"T" SHAPE



"O" RING GROOVE



BLOCK

Special Shapes always available

METRIC SEATS

ALL MATERIALS - ALL METRIC SIZES



MS50 Cup Mount



MS60 Cup Mount



MS44 "O" Ring



MS66 "O" Ring



MS99 "O" Ring



MS13 "O" Ring

MECHANICAL PACKING

A-12



X Braided Pure PTFE with Graphite

A-78L



Lubricated PTFE

A-35



Exfoliated Graphite Yarn

- All standard packing styles available
- GFO
- Valve Packing
- Ring Sets
- Cut and Sheet Gaskets



AJS Joint Sealant



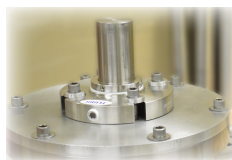
EZ-Pak Injectible packing

SEAL SERVICE CENTER

- Repair of **all seal styles** regardless of manufacturer
- Precise **attention to detail**, and years of technical seal repair **experience**
- Diverse domestic and international **sourcing network** minimizes costs and shortens lead times
- Reassembly to original **OEM specifications**
- Precision seal **surface lapping** to 2-3 lightbands
- **Ultrasonic** cleaning



Detailed breakdown and reassembly to like new conditions.



Pressure tests to assure field success



All brands repaired



213 Cummings Road, Broussard, LA 70518, USA
Phone: 337.839.1704 Fax: 337.839.1706
Website: www.cardonsales.com