

FLOMORE

Different By Design[®]

Product Summary



1300 Series

The 1300 Series injectors are designed to utilize the motion of the walking beam of a pumping unit and inject small amounts of chemicals per day (less than a pint to a few quarts with injection pressures up to 1500 lbs). This injector may be double headed with different size plungers.

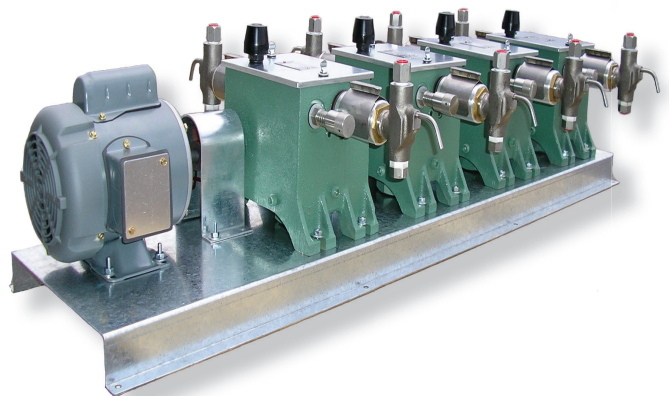


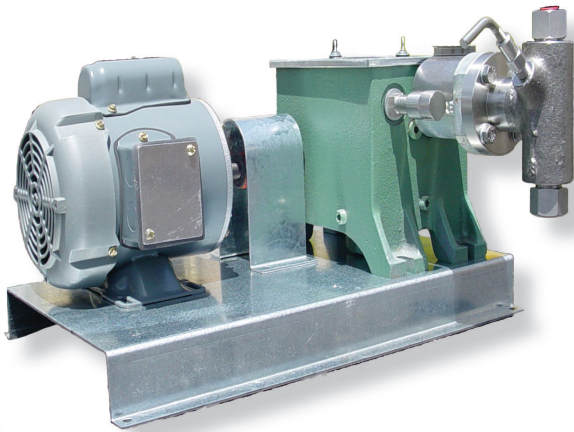
3800 Series

The design for the 3800 Series is probably the oldest pneumatically (air or gas) driven injector. It can be double headed with different or same size plungers in order to handle different chemicals at different rates and pressures.

4400 Series

Our 4400 Series is an electric driven injector that can utilize any of the four plunger sizes or three gear ratios with a single head or up to eight heads for a combination of pressure and volume requirements. The volume pumped can be changed with a simple turn of a micrometer knob from 0-100% of capacity. Available in corrosion resistant trim.



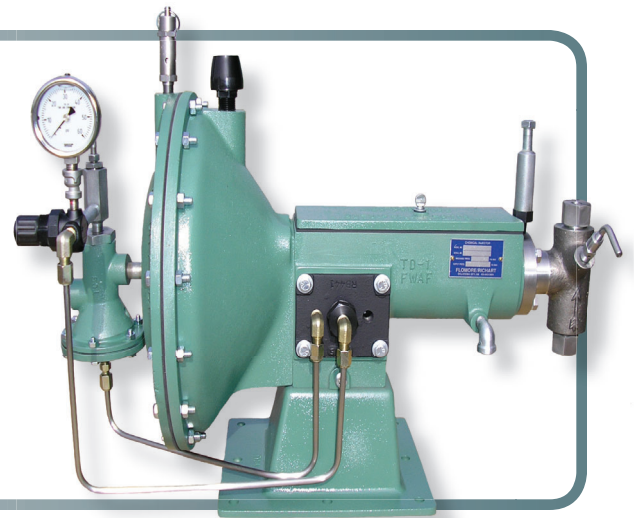


4500 Series

The Flomore 4500 Series injector features $\frac{3}{4}$ " and 1" plungers, and can be dual headed. These electric driven injectors can handle pressures up to 300 lbs. with volumes up to 1300 GPD. Plunger material is 17-4 with Armaloy surface or ceramic coated.

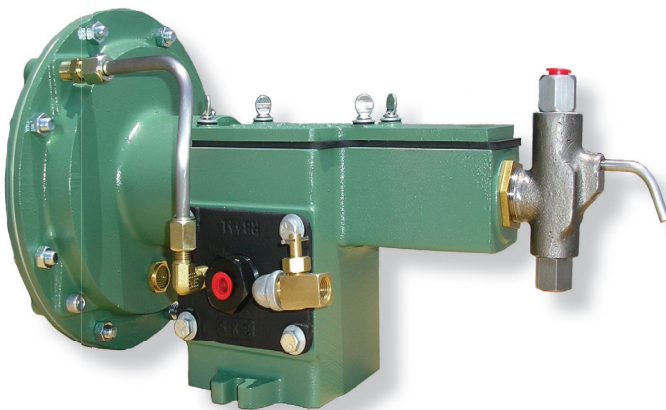
5020 Series

The 5020 Series model is one of two diaphragm, gas driven injectors we offer. This injector is typically used to inject methanol in larger quantities and higher pressures (up to 20,000psi) at the christmas tree and at lower pressures in gas processing and pipeline applications. Also used to deliver corrosion inhibitor where needed.



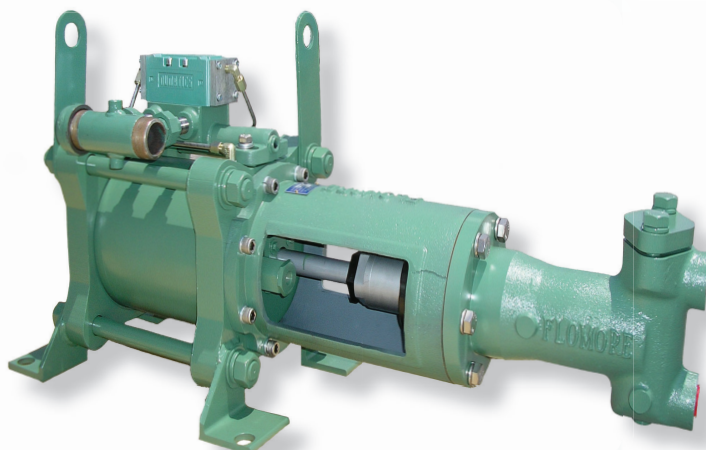
5200 Series

The 5200 Series injector is our other diaphragm, gas driven, plunger pump. It is designed to handle less volume and lower pressures (up to 6,000 lbs). This injector has the least amount of moving parts of any other comparable pump. Stainless steel, o'ring type, bottom and upper seating arrangements are offered as well as metal-to-metal seats.



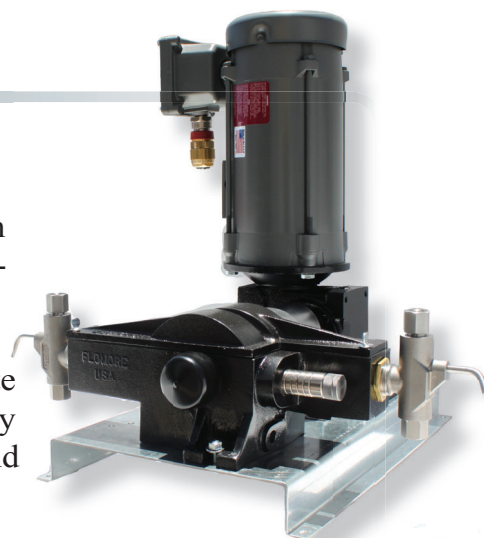
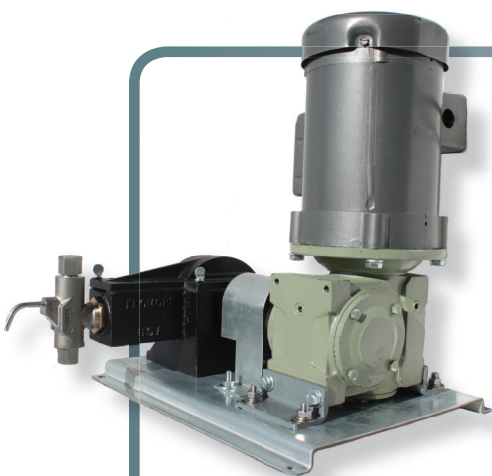
6200 Series

The 6200 Series pump consists of a series of basic pump options all developed from a modular power unit. All units are pneumatically driven, positive displacement, single or double acting, reciprocation pumps.



3500 Wolf Series Simplex and Duplex

The Flomore 3500 series chemical injection pumps are electric driven, positive displacement pumps utilizing C-faced motors and common gear reducers. The gear reducers are available in 30 and 60 strokes per minute configurations. The 3500 Series can fill many application requirements of different flow and pressures.



NEW 3000 Solar Series

The New 3000 Series is a positive displacement solar pump powered by Solar Panels creating environmentally friendly energy. Our New 3000 Series includes a crosshead design with plunger stroke adjustment easily changing the distance traveled by the plunger with a plunger pin. Also maximizing efficiency with perfect straight linear motion, our **NEW** Bottom Adjustment Bar with two sealed bearings creates a straight line motion for the crosshead to travel saving energy usage from the battery. Our standard model includes a 100 watt panel, 12/12 regulator, battery box, deep cell battery, pole type stand, on/off timer and a correctly sized pump to meet your requirements.



FLOMORE GAUGES & GAUGE GLASS

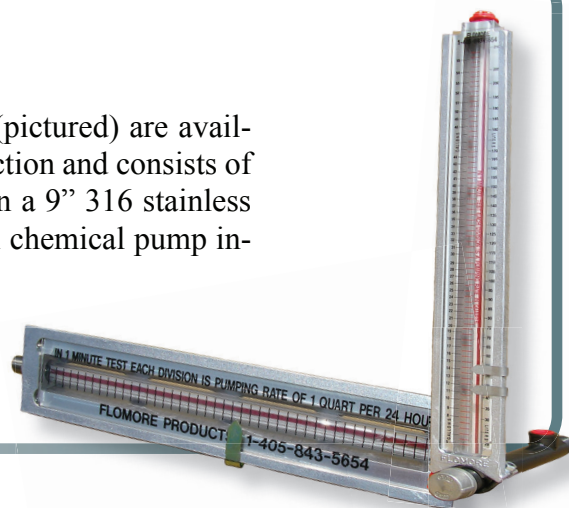


Tank Gauge

Flomore's Model 2000 Tank Gauge utilizes a simple push-pull operation for test (push) run (pull). All metal parts are 303 or 304 stainless steel. The movable level indicator is also made from stainless steel, which means it will not be affected by sun-light or break like an o'ring.

Drum Gauge

Flomore's new 400.01 Drum Gauge assemblies (pictured) are available in standard, plastic, or stainless steel construction and consists of our 55 gallon 300 Series drum gauge mounted on a 9" 316 stainless steel nipple with a 1/4" female nipple for vertical chemical pump installation.



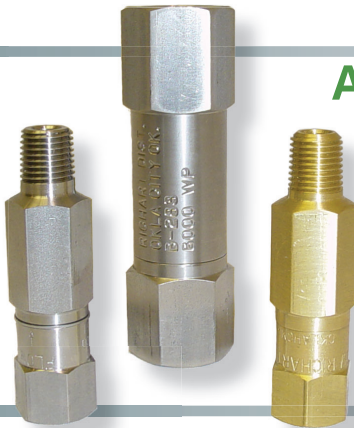
Gauge Glass

Our "Unified" Gauge Glass is manufactured for fluid sight level work in a wide range of applications. They are manufactured from highly chemical and corrosion resistant borosilicate glass, noted for its clarity and mechanical strength properties.

FLOMORE VALVES

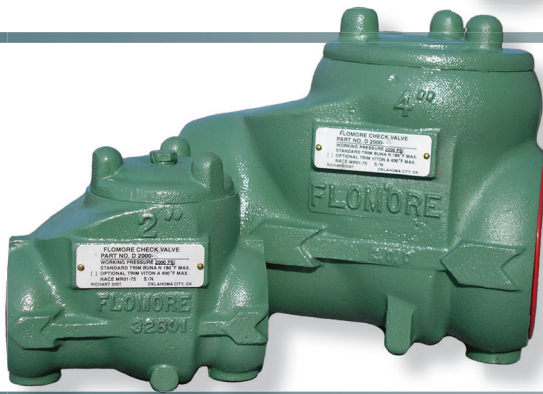
Line Checks

Inline Check Valves are available in brass, 303, 304, or 321 stainless steel, and Inconel. Several types of seating material are available including, buna N, Viton, Aflas, Kalrez or metal-to-metal. Pressures up to 15,000 psi. Multiple sizes are also available.



Atomizing Nozzles

The stainless steel atomizing nozzle does a great job of putting the methanol or scale inhibitor into the gas stream as a mist, which is the most effective and least costly method of delivering the product into the flow.



Swing Checks

The Flomore ductile and steel threaded end swing check valves meet MR-01-77 NACE standards. The standard seal material is buna N (180° F). We can also trim with Flomore's "Coldseal" to -50° F and to 400° F with Viton. Standard clapper material is carbon steel and we also offer 17-4 stainless steel. Pressure range is from 300-5,000 psi WOG.

Ball Checks

The Flomore ductile iron, carbon steel, and stainless steel ball checks can be trimmed with a Viton seat seal assembly for elevated temperatures and chemical resistance. Standard trim is stainless steel ball, buna N seal with stainless support member. Available in 1/2", 3/4", 1" and 2" sizes and pressures of up to 2000 pounds in ductile and up to 5000 pounds in WBC Carbon Steel.



S2003-2000-1
2000#



S3003-3000-1
3000#



S3603-3600-1
3600#



S1503-1440-1
1440#



S5003-5000-1
5000#

Carbon Steel Swing Checks

Flomore Products has added Investment Cast Carbon Steel Swing Checks to our product line. These valves have threaded ends, material specification ASTM A-216 WCB Carbon Steel available in working pressures from 720 to 5,000 pounds in 1" and 2" sizes. Buna-N seals are standard (180 degrees F. Max) Optional Viton seals available (400 degrees F Max). Standard Clappers are ASTM A-216 WCB with 316 SS clappers optional.

Distributors / Representatives/ Pump Service Dealers

Cardon Sales Company, LLC

Houston Gulf Coast
Sales Office
3801 Trent Cove Ln.
Pearland, TX 77584
713-870-8765

Mike Stockwell - Sales Manager
mstockwell@cardonsales.com

Main Sales Office

Factory Warehouse
213 Cummings Road
Broussard, LA 70518
337-839-1704

Fax: 337-839-1706
www.cardonsales.com
Bruce Cardon - Sales Rep.
Cell Phone: 337-280-3157
bcardon@cardonsales.com

Kilgore Sales Office
P.O. Box 923
Kilgore, TX 75662
903-522-1025

Tammy Hunt - Sales Rep.
THunt@cardonsales.com

Patterson Equipment Sales, Inc.

1610 S. Regal Avenue
Odessa, TX 79763
432-332-3345 Fax: 432-332-3348
Chad Patterson - Sales Rep.
chad@pattersonequipsalesinc.com

Sales Representatives

Mike Maresh
MCM Industrial Solutions, LLC.
18025 S.E. 272nd Street. Apt. A201
Covington, WA 98040
307-266-2260
sirmaresh@yahoo.com

Rocky Mountain Oilfield
Flip Cooper
414 South Elm Street
Casper, WY 82601
307-266-2260
rkymtn1@wyobeam.com

Williamsport, PA Branch
Jason Lewis
Adam Zarzyczny
1575 Frederick Ave.
Williamsport, PA 17701
570-323-1115

REP Sales, Inc.
Olney, IL Branch
Jim Mowrey
1124 S. Whittle Ave.
Olney, IL 62450
1-800-274-2003
jim@repsales.net

Dover, OH Branch
Brandon Mowrey
Rusty Howell
3545 Brightwood Rd. SE
Midvale, OH 44653
740-922-1557

Pump Service Dealers

Alpha Tank & Pump
Chad Perrish
116 Graham Rd,
Rhome, TX 76078
817-713-2216
Fax:817-636-2216

Alpha Tank & Pump II
Eric Owings
202 W Comal Street
Pearsall, TX 78061
830-334-8484
Fax:830-830-8485

Pump Service Dealers

BDM Supply Ltd.

Bill Davidson

6810 68th Avenue

Edmonton, Alberta

Canada T6B 3C5

1-888-434-6113

BDM@intervaun.com

El Campo Production Services

Charles Mazel

P.O. Box 1452

El Campo, TX 77437

979-543-8064

Flow-Zone, LLC

Ty Stutchman

2530 Garden Rd.

Bldg. F

Pearland, TX 77581

903-935-5522

info@flow-zone.com

INJECT-TECH

Taylor Mahaffey

103 A Balboa Dr.

Broussard, LA 70518

337-735-4876

Fax: 337-409-0494

Taylor Mahaffey

908 W. Harrison Rd.

Longview, TX 75604

337-735-4876

Fax: 337-409-0494

Kaiser Pump & Valve

John Kaiser

11894 Highway 149

Longview, TX 75603

903-643-9232

M&M Equipment Company

Mike Johnson

P.O. Box 1293

Great Bend, KS 67530

620-792-3162

m&mequip@sbcglobal.net

Moores Pump & Services, Inc.

Scotty Roy

P.O. Box 746

Broussard, LA 70518

373-837-2794

sroy@moorespump.com

Precision Pump & Valve, Inc.

Phillip Hoffpauir

650 4th Street

Floresville, TX 78114

830-393-1919

Fax: 830-393-2828

jderouen@precisionpv.com

Pump Service Dealers

Progressive Pump Corporation

P.O. Box 73108
Houston, TX
77273-3108
281-350-5757

davidhuff@progressivepump.com

Pruitt Production Service

Jay Pruitt
P.O. Box 808
Giddings, TX 78942
979-542-5104
jpruitt@tconline.net

Pryor Sales & Service Inc.

2502 Houston Highway
Victoria, TX 77902
361-575-6354
Brad@pryorsales.com

RDM Equipment Co., Inc.

Stan Garrison
P.O. Box 169
Wooster, OH 44691
330-264-8808

Speed Specialty

Jim Kyer
3010 Kermit Highway
Odessa, TX 79764
432-333-2711
Support@speedspecialtyodtx.com

T&J Valve

Johnny Fowler
P.O. Box 61066
San Angelo, TX 76906
575-746-2287

Vesco Supply Company

Brian Hogue
419 E Maple
Alva, OK 73717
580-327-6996
vescoinc@ugomail.net
www.vesco-inc.com

Brian Hogue
P.O. Box 246
Woodward, OK 73802
580-256-2569
vescoinc@ugomail.net
www.vesco-inc.com

Wyco Pump Repair & Sales

Mike Harris
P.O. Box 291
Wiley, CO 81092
719-740-0882
mikeharris@wycopump.com

International Pump Service Dealers

Norda-Tech Services Ltd.

Rick Drader
4524 Eleniak Road
Edmonton, Alberta
Canada T6B 2S1
780-436-7755
Fax: 780-436-7761

Pump Tech Oilfield Manufacturing Ltd.

Chris Iverson
Bay 4
6404-45 Street
Leduc, AB T9E-7C2
780-461-7723
pumpstechoil@gmail.com

International Master Distributor

Houma Valve Service

Richard Bergeron
1909 Coteau Road
Houma, LA 70364
985-879-3594
Houmavalve@teche.net
www.houmavalve.com



OUR MISSION: Richart Distributors, Inc. is committed to supplying American made, quality products utilizing American workers and American foundries. In all areas of the organization, our goal is to continue to deliver excellence, strive for continual improvement with an “Always Forward” mentality and provide the best service possible to ensure maximum quality, efficiency and customer satisfaction.

“With an eye to the future and a commitment to excellence, Richart Distributors proudly manufactures American made products.” – Richard Pickens

CONTACT INFORMATION

Corporate Office

Richart Distributors, Incorporated

3415 South I-35 Service Road

Oklahoma City, OK 73129

405-843-5654 Fax: 405-619-3007

Toll Free 1-866-843-5654

www.flomore.com

Rex Haymaker - Executive Vice President

Cell Phone: 405-206-4807

Rex.Haymaker@flomore.com

Branch Office

Flomore @ North Dakota

533 East Villard Suite B

Dickinson, ND 58601

701-483-8267 Fax: 701-483-8268

John Browning - Branch Manager

Johnbr@rmow.com

**THANK YOU FOR CHOOSING SUPERIOR QUALITY AMERICAN MADE
FLOMORE PRODUCTS.**



**Proudly Made in the
U.S.A.**